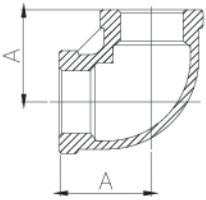


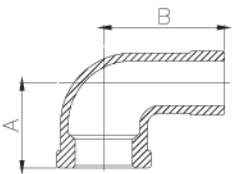


MSS SP 114 Heavy Pattern Stainless Steel Fittings



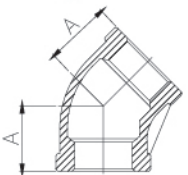
ELBOW – 90°

Size	1/8	1/4	3/8	1/2	3/4	1
A(mm)	20.5	20.5	23.6	28.4	33.2	38.0
Size	1¼	1½	2	2½	3	4
A(mm)	44.4	49.0	57.0	62.7	71.9	89.7



STREET ELBOW – 90°

Size	1/8	1/4	3/8	1/2	3/4	1
A(mm)	20.5	20.5	23.6	28.4	33.2	38.1
B(mm)	26.9	29.9	36.3	41.1	47.4	53.8
Size	1¼	1½	2	2½	3	4
A(mm)	44.4	49.0	57.0	63.2	71.6	89.4
B(mm)	63.5	69.8	82.5	91.7	106.4	135.6

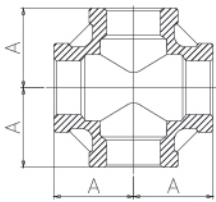


ELBOW – 45°

Size	1/8	1/4	3/8	1/2	3/4	1
A(mm)	17.5	17.5	20.5	22.0	25.4	28.4
Size	1¼	1½	2	2½	3	4
A(mm)	33.2	36.3	42.6	47.0	52.07	64.0

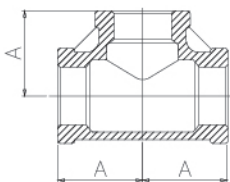


MSS SP 114 Heavy Pattern Stainless Steel Fittings



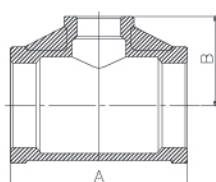
CROSS

Size	1/8	1/4	3/8	1/2	3/4	1
A(mm)	20.5	20.5	23.6	28.4	33.2	38.0
Size	1¼	1½	2	2½	3	4
A(mm)	44.4	49.0	57.0	62.7	71.9	89.6



TEE

Size	1/8	1/4	3/8	1/2	3/4	1
A(mm)	20.5	20.5	23.6	28.4	33.2	38.0
Size	1¼	1½	2	2½	3	4
A(mm)	44.4	49.0	57.0	62.7	71.9	89.6

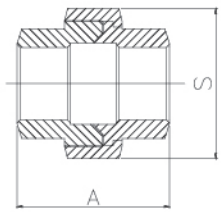


REDUCING TEE

Size	1/2*1/4	1/2*3/8	3/4*3/8	3/4*1/2	1*1/2	1*3/4	1¼*3/4
A(mm)	56.8	56.8	66.4	66.4	76.2	76.2	88.8
B(mm)	28.4	28.4	33.2	33.2	38.1	38.1	44.4
Size	1¼*1	1½*1	1½*1¼	2*1	2*1¼	2*1½	
A(mm)	88.8	98.0	98.0	114.3	114.3	114.3	
B(mm)	44.4	49.0	49.0	57.15	57.15	57.15	

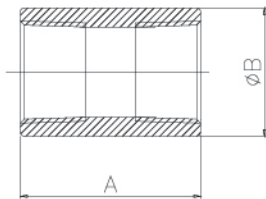


MSS SP 114 Heavy Pattern Stainless Steel Fittings



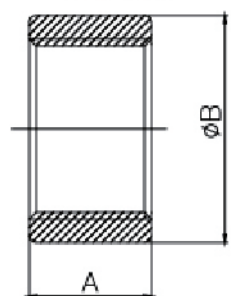
UNION

Size	1/8	1/4	3/8	1/2	3/4	1
A(mm)	31.1	31.6	34.7	39.7	42.6	48.6
S(mm)	28.5	28.6	33.6	38.6	46.9	57.7
Size	1¼	1½	2	2½	3	4
A(mm)	53.9	58.8	63.2	70.6	79.1	91.6
S(mm)	66.7	76.0	89.6	107.4	122	151.5



FULL COUPLING

Size	1/8	1/4	3/8	1/2	3/4	1
A(mm)	21.0	24.7	28.2	34.2	38.0	42.5
φB(mm)	14.5	17.6	21.0	26.0	30.5	38.2
Size	1¼	1½	2	2½	3	4
A(mm)	48.2	51.7	56.0	66.0	71.2	82.0
φB(mm)	47.0	52.8	67.8	80.0	97.0	124.0

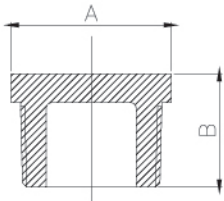


HALF COUPLING

Size	1/8	1/4	3/8	1/2	3/4	1
A(mm)	12.9	13.2	14.5	18.0	19.3	20.8
φB(mm)	20.0	22.3	26.6	31.5	37.6	46.0
Size	1¼	1½	2	2½	3	4
A(mm)	25.6	27.2	32.0	36.8	40.9	47.5
φB(mm)	55.6	64.0	76.4	85.0	102.0	128.8

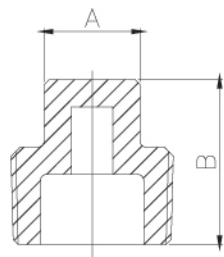


MSS SP 114 Heavy Pattern Stainless Steel Fittings



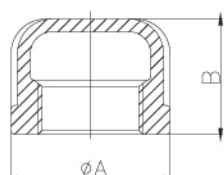
HEX PLUG

Size	1/8	1/4	3/8	1/2	3/4	1
A(mm)	12.7	15.7	17.2	22.0	30.4	36.3
B(mm)	12.8	14.6	16.1	19.0	21.5	25.3
Size	1¼	1½	2	2½	3	4
A(mm)	44.7	50.8	62.9	74.9	97.3	116.6
B(mm)	27.4	28.8	30.9	38.3	40.1	46.0



SQUARE HEAD PLUG

Size	1/8	1/4	3/8	1/2	3/4	1
A(mm)	7.0	9.5	11.0	14.2	15.8	20.6
B(mm)	15.3	18.2	19.9	23.8	27.1	31.7
Size	1¼	1½	2	2½	3	4
A(mm)	23.8	28.5	33.3	38.1	42.4	56.1
B(mm)	34.5	36.7	39.5	46.0	49.0	56.9



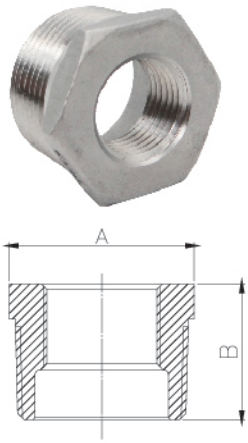
ROUND CAP

Size	1/8	1/4	3/8	1/2	3/4	1
φA(mm)	19.0	21.3	25.6	30.4	37.0	44.9
B(mm)	17.2	17.2	20.5	23.6	26.9	33.2
Size	1¼	1½	2	2½	3	4
φA(mm)	54.6	61.7	75.0	81.0	98.5	124.7
B(mm)	41.0	41.0	44.4	48.5	54.3	60.4



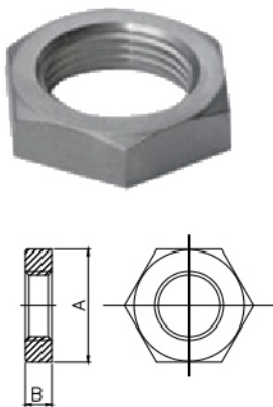
MSS SP 114 Heavy Pattern Stainless Steel Fittings

HEX BUSHING



Size	1/2*1/8	1/2*1/4	1/2*3/8	3/4*1/4	3/4*3/8	3/4*1/2
A(mm)	22.1	22.1	22.1	26.8	26.8	26.8
B(mm)	19.0	19.0	19.0	21.3	21.3	21.3
Size	1*1/4	1*3/8	1*1/2	1*3/4	1 1/4*1/2	1 1/4*3/4
A(mm)	34.8	34.8	34.8	34.8	44.3	44.3
B(mm)	25.3	25.3	25.3	25.3	27.6	27.6
Size	1 1/4*1	1 1/2*3/4	1 1/2*1	1 1/2*1 1/4	2*3/4	2*1
A(mm)	44.3	50.7	50.7	50.7	63.4	63.4
B(mm)	27.6	28.2	28.2	28.2	30.8	30.8
Size	2*1 1/4	2*1 1/2	2 1/2*1/2	2 1/2*3/4	2 1/2*1	2 1/2*1 1/4
A(mm)	63.4	63.4	74.7	74.7	74.7	74.7
B(mm)	30.8	30.8	37.6	37.6	37.6	37.6
Size	2 1/2*1 1/2	2 1/2*2	3*1	3*1-1/4	3*1-1/2	3*2
A(mm)	74.7	74.7	92.2	92.2	92.2	92.2
B(mm)	37.6	37.6	40.1	40.1	40.1	40.1
Size	3*2-1/2	4*1-1/4	4*1-1/2	4*2	4*2-1/2	4*3
A(mm)	92.2	116.6	116.6	116.6	116.6	116.6
B(mm)	40.1	48.0	48.0	48.0	48.0	48.0

HEX NUT

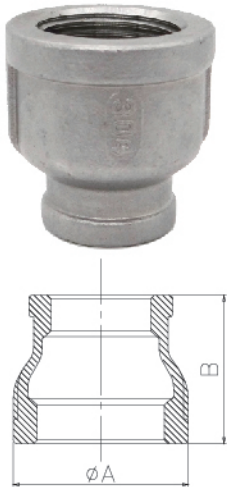


Size	1/8	1/4	3/8	1/2	3/4	1
A(mm)	18.0	21.8	25.9	33.8	36.6	44.4
B(mm)	5.3	6.6	7.8	8.4	9.1	9.6
Size	1 1/4	1 1/2	2	2 1/2	3	4
A(mm)	53.8	60.2	73.9	91.7	118.3	148.8
B(mm)	11.1	12.4	14.0	15.7	17.5	21.0

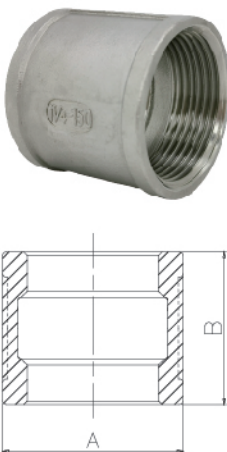


MSS SP 114 Heavy Pattern Stainless Steel Fittings

REDUCING COUPLING



Size	1/4*1/8	1/2*1/4	1/2*3/8	3/4*1/4	3/4*3/8	3/4*1/2
φA(mm)	21.3	30.5	30.5	37.0	37.0	37.0
B(mm)	25.4	35.0	35.0	38.0	38.0	38.0
Size	1*3/8	1*1/2	1*3/4	1 1/4*1/2	1 1/4*3/4	1 1/4*1
φA(mm)	45.0	45.0	45.0	54.5	54.5	54.5
B(mm)	41.1	41.1	41.1	50.8	50.8	50.8
Size	1 1/2*1/2	1 1/2*3/4	1 1/2*1	1 1/2*1 1/4	2*3/4	2*1
φA(mm)	61.7	61.7	61.7	61.7	75.0	75.0
B(mm)	53.8	53.8	53.8	53.8	63.5	63.5
Size	2*1 1/4	2*1 1/2	2-1/2*1	2-1/2*1-1/4	2-1/2*1-1/2	2-1/2*2
φA(mm)	75.0	75.0	86.1	86.1	86.1	86.1
B(mm)	63.5	63.5	83.0	83.0	83.0	83.0
Size	3*1	3*1-1/4	3*1-1/2	3*2	3*2-1/2	4*2
φA(mm)	103.1	103.1	103.1	103.1	103.1	129.8
B(mm)	83.0	83.0	83.0	83.0	83.0	111.5
Size	4*2-1/2	4*3				
φA(mm)	129.8	129.8				
B(mm)	111.5	111.5				



SOCKET BANDED

Size	1/2	3/4	1	1 1/4	1 1/2	2
A(mm)	30.5	37.0	45.0	54.6	61.7	75.0
B(mm)	35.0	38.0	41.1	50.8	53.8	63.5