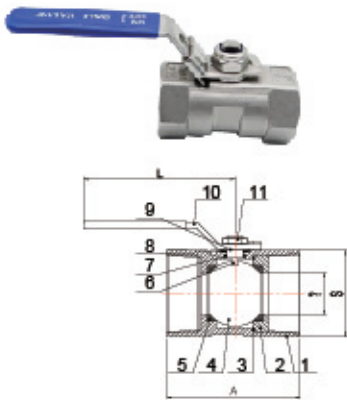




Stainless Steel Ball Valve

1PC BALL VALVES



Size	1/4	3/8	1/2	3/4	1
A(mm)	39.0	44.0	56.5	58.5	71.0
S(mm)	17.0	21.0	25.0	32.0	38.0
φ(mm)	4.6	6.8	9.2	12.5	15.0
L(mm)	59.0	79.0	85.0	87.0	99.0
Size	1¼	1½	2	2½	3
A(mm)	78.0	83.0	100.0	122.0	142.0
S(mm)	49.0	53.0	65.0	83.0	98.0
φ(mm)	20.0	25.0	32.0	38.0	50.0
L(mm)	99.0	126.0	126.0	176.0	176.0

No.	Part Name	Qty	Material
1	Body	1	304/316
2	Body Insert	1	304/316
3	Joint Gasket	1	PTFE
4	Ball	1	304/316
5	Joint Gasket	2	PTFE
6	Stem	1	304/316
7	Thrust Washer	1	PTFE
8	Stem Packing	1	PTFE
9	Stem Washer	1	304/316
10	Handle	1	304/316
11	Gland Nut	1	304/316

Features

Material: Stainless Steel 304, 316, 1.4308, 1.4408, CF8, CF8M

Thread type: NPT, BSP, PT, Metric, etc.

Thread Standards: ASME B1.20.1 BS21, DIN2999/259, ISO7-1, ISO228-1, JIS B 0203

Pressure: 1000PS/1000WOG

Pattern: Reduce Port

Option: Locking device available

Inspection Testing: API598, EN12266

Connection: Thread

Medium: Water, Oil, Gas

Process: Investment Casting

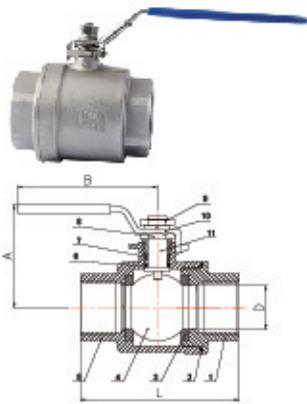
Working temperature: -10-180 °C

Size: 1/4" to 4" (DN8 to DN100)

100% individually tested



Stainless Steel Ball Valve



2PC BALL VALVES

Size	1/4	3/8	1/2	3/4	1
A(mm)	48.2	48.8	52.7	60.6	65.7
B(mm)	97.5	97.5	97.5	116.5	116.5
D(mm)	11.0	12.5	15.0	20.0	25.0
L(mm)	47.2	48.8	58.6	65.9	77.2
Size	1½	2	2½	3	
A(mm)	77.9	82.7	100.8	124.0	
B(mm)	153.0	153.0	192.0	248.0	
D(mm)	32.0	38.0	50.0	64.0	
L(mm)	90.5	98.2	121.5	145.4	

No.	Part Name	Qty	Material
1	Cap	1	304/316
2	Joint Gasket	1	PTFE
3	Ball Seat	2	PTFE
4	Ball	1	304/316
5	Body	1	304/316
6	Thrust Washer	1	PTFE
7	Stem Packing	1	PTFE
8	Gland Nut	1	304/316
9	Spring Nut	1	304/316
10	Handle	1	304/316
11	Stem	1	304/316

Features

Material: Stainless Steel 304, 316, 1.4308, 1.4408, CF8, CF8M
 Thread Standards: ASME B1.20.1 BS21, DIN2999/259, ISO7-1, ISO228-1, JIS B 0203
 Connection: Thread (Female/Male)
 Thread type: NPT, BSP, PT, Metric, etc.
 Medium: Water, Oil, Gas, etc.
 Process: Investment Casting
 Pressure Rating: 1000PS/1000WOG

Working temperature: -10-180 °C

Pattern: Full Port

Locking Device: Handle has a device to lock in the open or closed position (It can be easily removed)

Size: 1/4" to 4" (DN8 to DN100)

100% leak tested

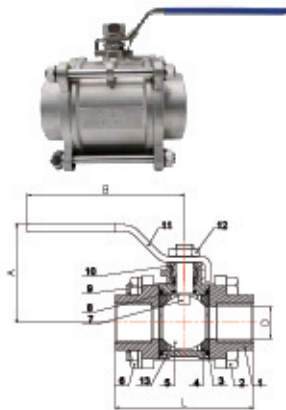
Inspection Testing: API598, EN12266

2 PC ball valves are the most popular valves



Stainless Steel Ball Valve

3PC BALL VALVES



Size	1/4	3/8	1/2	3/4	1
A(mm)	45.5	45.5	48.0	61.5	68.0
B(mm)	99.5	99.5	99.5	126.5	126.5
D(mm)	12.5	12.5	15.0	20.0	25.0
L(mm)	57.5	59.0	62.8	78.0	82.2
Size	1 1/4	1 1/2	2	2 1/2	3
A(mm)	79.0	86.5	94.5	119.5	130.0
B(mm)	153.0	153.0	192.0	248.0	248.0
D(mm)	32.0	38.0	50.0	64.0	76.0
L(mm)	97.6	107.6	119.7	167.2	175.6

No.	Part Name	Qty	Material
1	Cap	2	304/316
2	Bolts	4	304/316
3	Body Seal	2	PTFE
4	Ball Seat	2	PTFE
5	Ball	1	304/316
6	Nut	4	304/316
7	Stem	1	304/316
8	Thrust Washer	1	PTFE
9	Stem Washer	1	PTFE
10	Gland Nut	1	304/316
11	Handle	1	304/316
12	Stem Nut	1	304/316
13	Body	1	304/316

Features

Material: Stainless Steel 304, 316, 1.4308, 1.4408, CF8, CF8M

Thread Standards: ASME B1.20.1 BS21.DIN2999/259, ISO228-1, JIS B 0203, ISO7/1

Connection: Thread, Welded

Thread type: NPT, BSP, BSPT, etc.

Medium: Water, Oil, Gas

Investment Casting

Pressure: 1000PSI/PN63

Pattern: Full port design

Size: 1/4" to 4" (DN8 to DN100)

Locking device available

Working temperature: -20-180 ℃

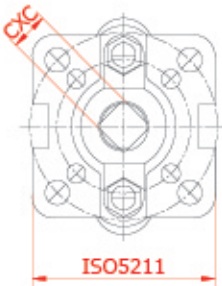
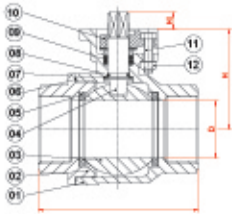
100% individually tested

Inspection Testing: API598, EN12266



Stainless Steel Ball Valve

2PC BALL VALVES WITH MOUNTING PAD



Size	1/2	3/4	1	1¼	1½	2
D(mm)	15.0	20.0	25.0	32.0	38.0	50.0
L(mm)	62.0	74.0	86.0	99.0	109.0	122.0
H(mm)	48.5	53.5	58.5	71.0	76.0	83.5
H1(mm)	7.0	7.0	11.0	11.0	14.0	14.0
C(mm)	7.0	7.0	11.0	11.0	14.0	14.0

No.	Part Name	Material
1	Body	CF8/M
2	End cap	CF8/M
3	Ball	304/316
4	Stem	304/316
5	Seat	PTFE
6	Gasket	PTFE
7	Thrust Washer	PTFE
8	Stem o-ring	VITON
9	Packing	PTFE
10	Gland	CF8
11	Bolt	304
12	Nut	304

Features

Material: Stainless Steel 304, 316, 1.4308, 1.4408, CF8, CF8M

Thread Standards: ASME B1.20.1 BS21, DIN2999/259, ISO7-1, ISO228-1, JIS B 0203

Connection: Thread

Thread type: NPT, BSP, PT, Metric, etc.

Medium: Water, Oil, Gas

Two-Piece Investment cast body

ISO5211 Mounting pad

Process: Investment Casting

Silicone Free

Full Port for unobstructed flow

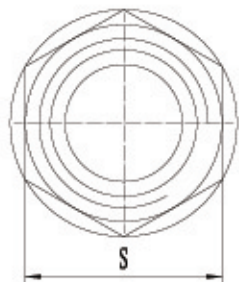
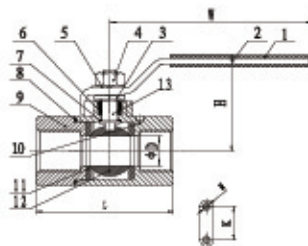
Pressure up to 1000PSI

100% individually tested

Inspection Testing: API598, EN12266



Stainless Steel Ball Valve



2PC Ball Valve 2000WOG

Size	1/4	3/8	1/2	3/4	1	1¼	1½	2
D(mm)	11.0	12.5	12.5	17.5	22.0	25.0	32.0	38.0
L(mm)	58.0	58.0	58.0	79.6	86.0	103.0	111.0	137.0
H(mm)	48.0	48.0	48.0	67.0	70.0	85.0	90.0	95.0
W(mm)	105.0	105.0	105.0	110.0	125.0	150.0	150.0	190.0
S(mm)	26.5	26.5	26.5	32.0	41.0	50.0	55.0	70.0
K(mm)	27.5	27.5	27.5	34.8	34.8	34.8	34.8	34.8
M	10-32UN	10-32UN	10-32UN	10-32UN	10-32UN	10-32UN	10-32UN	10-32UN

No.	ITEM	Material
1	PLASTIC COVER	PLASTIC
2	HANDLE	304
3	GLAND NUT	304
4	STEM NUT	304
5	SPRING WASHER	304
6	STEM PACKING	PTFE
7	THUST WASHER	PTFE
8	JOINT GASKET	PTFE
9	CAP	CF8/CF8M
10	BODY	CF8/CF8M
11	BALL STEAT	PTFE
12	BALL	CF8/CF8M
13	STEM	304/316

Features

Material: Stainless Steel 304, 316, 1.4308, 1.4408, CF8, CF8M

Thread Standards: ASME B1.20.1 BS21, DIN2999/259, ISO7-1, ISO228-1, JIS B 0203

Connection: Thread (Female/Male)

Thread type: NPT, BSP, PT, Metric, etc.

Medium: Water, Oil, Gas

Process: Investment Casting

Process: Investment Casting

Pressure Rating: 2000PSI/2000WOG

Working temperature: -10-180 °C

Pattern: Full Port

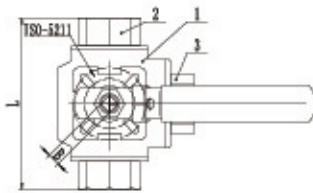
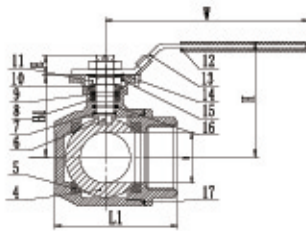
Locking Device: Handle has a device to lock in the open or closed position (It can be easily removed)

100% leak tested

Inspection Testing: API598, EN12266



Stainless Steel Ball Valve



3 WAY BALL VALVE

Size	1/4	3/8	1/2	3/4	1	1 1/4
φD(mm)	9.0	11.0	12.5	16.0	20.0	25.0
W±2(mm)	143.0	143.0	143.0	143.0	163.0	163.0
L±2(mm)	79.0	79.0	79.0	83.0	102.0	120.0
L1±2(mm)	64.0	64.0	64.0	68.0	82.0	90.0
H±2(mm)	76.0	76.0	76.0	80.0	95.0	98.0
B(mm)	9.0	9.0	9.0	9.0	11.0	11.0
E±1(mm)	9.0	9.0	9.0	9.0	11.0	11.0
ISO5211	F04/03	F04/03	F04/03	F04/03	F05/04	F05/04
H1(mm)	42.0	42.0	42.0	49.0	59.5	63.0
Size	1 1/2	2	2 1/2	3	4	
φD(mm)	32.0	38.0	48.0	65.0	75.0	
W±2(mm)	188.0	188.0	343.0	343.0	343.0	
L±2(mm)	126.0	150.0	168.0	198.0	252.0	
L1±2(mm)	107.0	124.0	135.0	166.0	207.0	
H±2(mm)	110.0	119.0	135.0	150.0	161.0	
B(mm)	14.0	14.0	17.0	17.0	17.0	
E±1(mm)	14.0	14.0	15.6	20.0	28.0	
ISO5211	F07/05	F07/05	F07/10	F07/10	F07/10	
H1(mm)	73.5	82.8	103.5	118.0	130.0	

Features

Material: Stainless Steel 304, 316, 1.4308, 1.4408, CF8, CF8M

Thread Standards: ASME B1.20.1 BS21, DIN2999/259, ISO7-1, ISO228-1, JIS B 0203

Connection: Thread

Thread type: NPT, BSP, PT, Metric, etc.

Medium: Water, Oil, Gas

Process: Investment Casting

Pressure Rating: 1000PSI/1000WOG

Working temperature: -10-180 °C

Pattern: Full Port

ISO5211 Mounting Pad

Optional locked device handle

100% leak tested

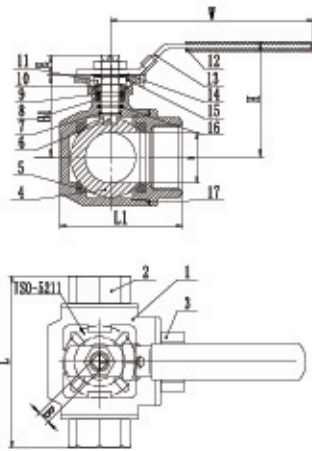
Inspection Testing: API598, EN12266



Stainless Steel Ball Valve



3 WAY BALL VALVE



No.	ITEM	QTY	Material
1	BODY	1	CF8/CF8M/WCB
2	CAP(1)	2	CF8/CF8M/WCB
3	CAP(2)	1	CF8/CF8M/WCB
4	BALL	1	CF8/CF8M
5	BALL SEAT	4	PTFE
6	STEM	1	304/316
7	STEM SEAL	1	PTFE
8	STEM PACKING	1	PTFE
9	GLAND NUT	1	304
10	SPRING WASHER	2	304
11	NUT	2	304
12	PLASTIC COVER	1	PLASTIC
13	HANDLE	1	304
14	WASHER	1	304
15	THRUST WASHER	1	304
16	O-RING	1	VITON
17	BODY PACKING	1	PTFE