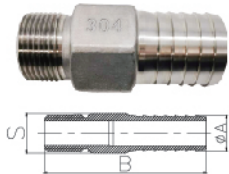




Stainless Steel Hose Barb Fitting

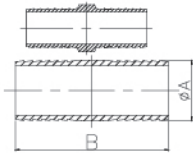
HOSE BARB FITTING



Size	1/2B*1/2M	3/4B*1/2M	3/4B*3/4M	1B*3/4M	1B*1M	1 1/4B*1M
A(mm)	16.8	21.5	21.5	27.2	27.2	36.0
B(mm)	72.6	74.0	75.0	85.0	86.2	90.6
S(mm)	19.0	26.0	26.0	30.6	30.6	40.0
Size	1 1/4B*1 1/4M	1 1/2B*1 1/2M	2B*2M			
A(mm)	36.0	41.7	53.6			
B(mm)	95.3	97.6	101.8			
S(mm)	40.0	46.5	58.0			



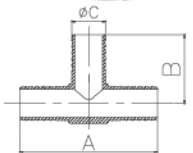
HOSE BARB COUPLING



Size	1/2B*1/2B	3/4B*3/4B	1B*1B	1 1/4B*1 1/4B	1 1/2B*1 1/2B	2B*2B
φA(mm)	16.8	21.5	27.2	36.0	41.8	53.6
B(mm)	83.2	81.0	86.0	81.8	95.0	107.0



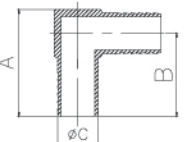
HOSE BARB TEE



Size	3/4B*3/4B*3/4B	1B*1B*1B	1 1/4B*1 1/4B*1 1/4B
A(mm)	92.0	106.0	124.4
B(mm)	46.0	53.0	62.2
φC(mm)	21.5	27.2	36.0



HOSE BARB ELBOW



Size	3/4B*3/4B*3/4B	1B*1B*1B	1 1/4B*1 1/4B*1 1/4B
A(mm)	59.0	68.0	81.2
B(mm)	46.0	53.0	62.2
φC(mm)	21.5	27.2	36.0